



INTRODUCING THE NEW CS 1200



Introducing the CS 1200 Intraoral Camera

The CS 1200 is a compact, easy-to-share intraoral camera delivering the highest image quality in its class – at a surprisingly affordable price.



Benefits of CS 1200

- High image quality
- Easy to share and integrate
- Affordable price – quality within reach





 **Carestream**
DENTAL

HIGH IMAGE QUALITY

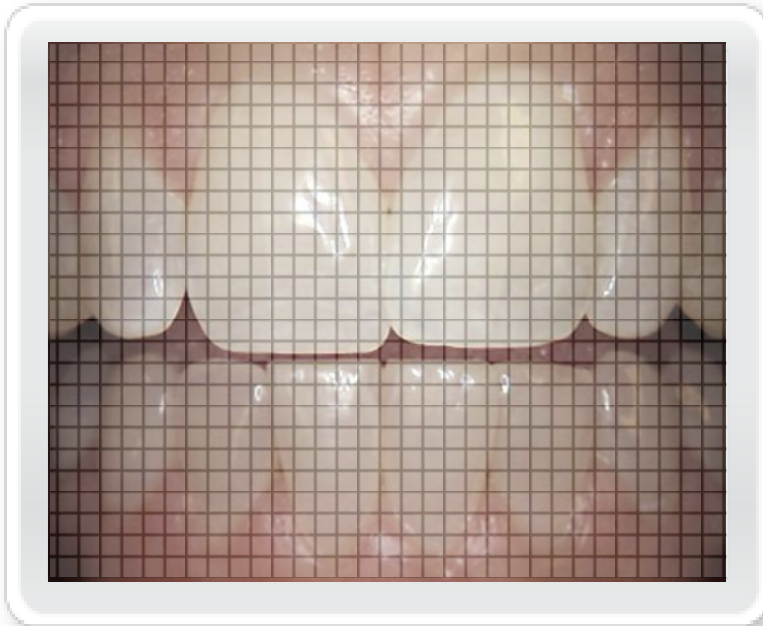


Highest image resolution

- High image resolution (1024 x 768)

720 pixels

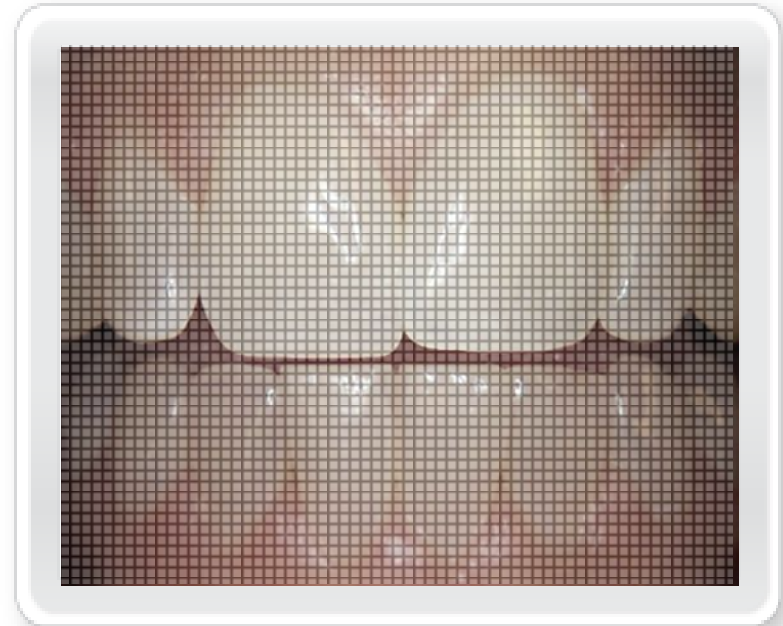
576 lines



Other cameras

1024 pixels

768 lines



CS 1200 intraoral camera

High quality images

Macro view

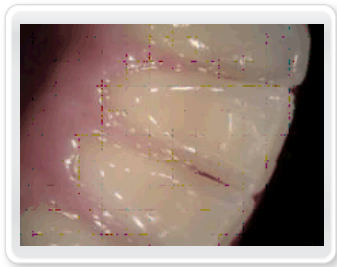


Arch view



See the difference: High image quality

CS 1200



Competitor A



Competitor B



Competitor C



Sophisticated illumination

- Latest generation LED lighting system ensures perfectly and uniformly lit images in any lighting condition while reducing emitted heat.





EASY TO USE, EASY TO SHARE



Simple, powerful imaging software

- Intuitive user interface, easy to learn and use
- Images are stored and easily retrieved to track progression or regression over time
- Comprehensive display facilitates diagnoses and patient communication
- Fully customizable, including color coding and sensitivity levels
- Integrates with Carestream Dental Imaging Software and leading third party imaging software
- Images can be easily shared with patients and colleagues



Easy integration, easy sharing

- Up to 300 images can be stored then reviewed through the camera with a touch of a button and viewed on a TV or monitor (AV, S-Video only), eliminating the need for computers in each operatory*
- Review images captured via USB on a PC directly through the camera's review button
- Works without docking stations – making integration and switching between operatories fast and convenient



*Feature available at later date

Designed for ease of use

- Lightweight design to minimize operator fatigue
- Ergonomically designed for use in hands of all sizes
- Rounded head and tapered shape improve patient comfort
- One-click capture for one-handed operation





TECHNICAL SPECIFICATIONS






Technical specifications

Sensor	1/2.5 CMOS , 2592 (H) x 1944 (V) – Is this accurate?
Still Image Resolution	1024 (H) x 768 (V)
Video Resolution	640 x 480
Focus Range	3 mm – 25 mm
Capture	One click, single button
Image Storage	Up to 300 images to review through camera
Light Source	6 white LEDs
Connection	USB (direct to PC), S-video (direct to monitor), AV (direct to monitor)

*S-video and AV available at a later date

Tradition of quality

Feature	CS 1200 	CS 1500 	CS 1600 
Caries detection aid	No	No	Yes
Still image resolution	1024 (H) x 768 (V)	1024 (H) x 768 (V)	1024 (H) x 768 (V)
Video resolution	640 x 480	640 x 480	640 x 480
Focus range:	3mm-25mm	1mm -infinity	1mm -infinity
Polarizer feature (glare reduction)	No	No	Yes
Portrait images	No	Yes	Yes – independent portrait mode
Liquid lens autofocus	No, fixed focus	Yes	Yes
Dual button capture	No	No	Yes
Connection	USB (direct to PC) S-video (direct to monitor)* AV (direct to monitor)*	USB (direct to PC) S-video (docking station) AV (docking station)	USB (direct to PC)
Display	PC, video, analog	PC, video, analog	PC only
Wireless (Wi-Fi) option	No	Yes	No
Illumination system	6 LEDs	12 LEDs	18 LEDs (6 blue, 6 white polarized, 6 white non-polarized)

