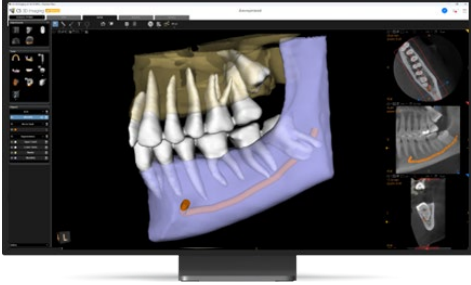



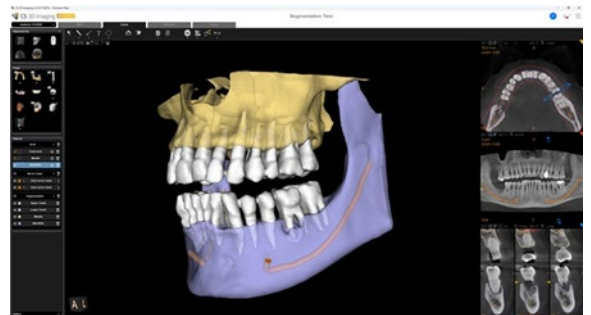



	Release Date	Highlights
	April, 2026	<p>CS 3D Imaging 3.10.75</p> <p>Premium features </p> <ul style="list-style-type: none"> AI automated segmentation tool Automatic tooth identification and labeling Export of segmented objects Expanded automated crown and implant placement Improved crown placement in occlusion context Extended Premium trial period and Premium trial restart In-application user feedback collection <p>Standard features</p> <ul style="list-style-type: none"> Faster processing performance for auto arch and auto nerve mapping

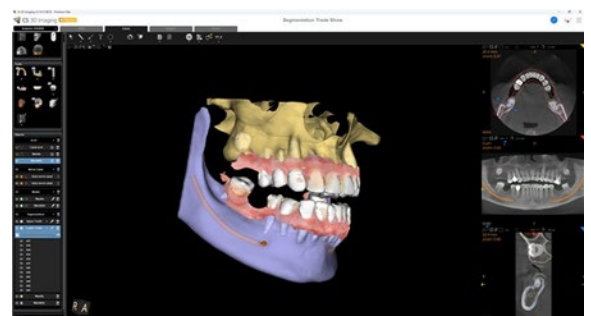
CS 3D Imaging 3.10.75

included in CS Imaging Suite 3.26.1.0 release April 2026

- 1 AI automated segmentation tool**  
- CS 3D Imaging Premium now includes an AI-based automated segmentation tool that enables fast and precise anatomical segmentation and seamless object export.
- Segmentation of anatomical structures (bones and teeth)
 - Background processing, allowing users to continue working during segmentation
 - Visual progress indication during processing
 - Segmented objects displayed:
 - In 3D scenes
 - Outlined in MPR views
 - Listed in the Objects panel
 - Adjustable opacity and color for each segmented object
 - Ability to hide or display individual segmentation objects

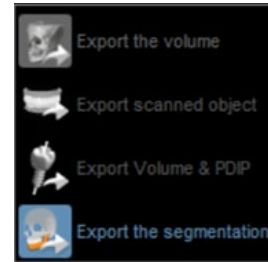


- 2 Automatic tooth identification and labeling** 
- When a digital model is aligned with a CBCT volume:
- Teeth are automatically segmented and labeled
 - Each tooth is defined as an independent object
 - Individual teeth can be shown or hidden
 - Teeth labels remain editable for manual adjustments



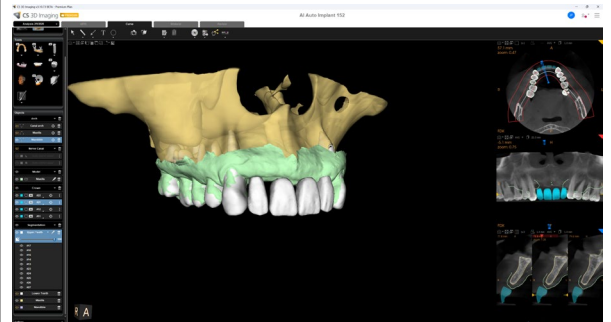
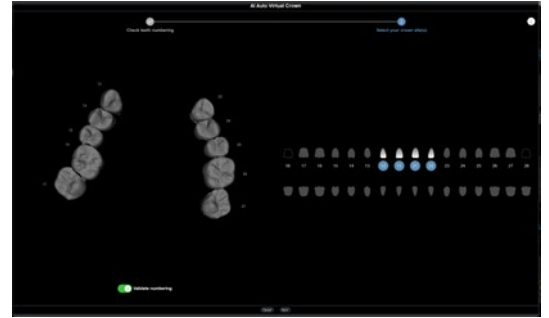
3 Export of segmented objects PREMIUM

- Segmented anatomical objects can be exported as STL files to a local directory
- Exported files can be imported and used in third party clinical and planning software



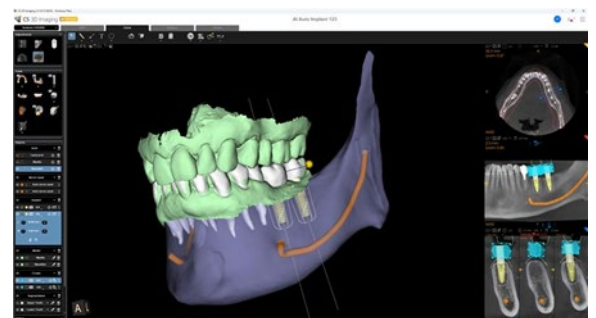
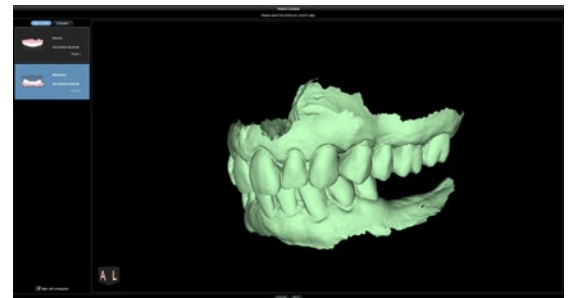
4 Expanded crown and implant placement PREMIUM

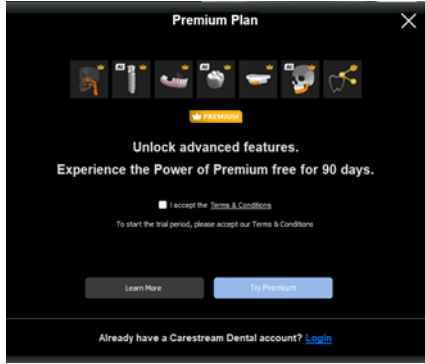

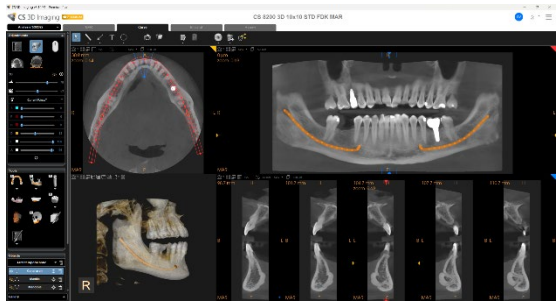
- Premium users can now automatically place up to four crowns and four implants side by side (previously limited to three)



5 Improved crown placement in occlusion context PREMIUM

- Enhanced algorithms improve crown positioning accuracy in occlusal scenarios
- Results in more predictable prosthetic planning outcomes



<p>6 Extended Premium trial period PREMIUM</p> <ul style="list-style-type: none"> ▪ Trial duration extended from 30 days to 90 days ▪ Provides more time to explore and evaluate Premium capabilities <p>Premium Trial restart PREMIUM</p> <ul style="list-style-type: none"> ▪ Users who have previously activated a Premium trial may restart a new trial period to experience new features such as AI segmentation 	 <p>The screenshot shows a 'Premium Plan' dialog box with a close button (X) in the top right. It features a row of icons representing various dental software features. Below the icons is a 'PREMIUM' badge. The main text reads: 'Unlock advanced features. Experience the Power of Premium free for 90 days.' There is a checkbox for 'I accept the Terms & Conditions' and a note: 'To start the trial period, please accept our Terms & Conditions.' At the bottom, there are 'Learn More' and 'Get Premium' buttons. A link for 'Already have a Carestream Dental account? Login' is at the very bottom.</p>
<p>7 In application user feedback collection PREMIUM</p> <p>CS 3D Imaging Premium now enables users to provide feedback directly within the application:</p> <ul style="list-style-type: none"> ▪ Rate perceived software value ▪ Submit qualitative comments ▪ One feedback submission per user ▪ Options to submit, postpone, or skip permanently 	 <p>The screenshot shows a 'CS 3D Imaging Premium feedback' form. The title is 'Help us improve CS 3D Imaging Premium'. It asks 'Overall, how valuable is CS 3D Imaging Premium for your practice?' with a star rating system (☆ ☆ ☆ ☆). Below this, it asks 'What would make it more valuable?' with checkboxes for: 'Additional user guidance (e.g. tutorial videos)', 'Improved dental accuracy (e.g. AI-based, if possible)', 'Additional advanced capabilities', and 'I already get strong value from the software'. There is a text area for 'Any other ideas to increase its value for your practice?' with a 'Max. 500 characters' limit. At the bottom, there are 'Later', 'Submit', and 'Do not show again' buttons.</p>
<p>8 Standard feature</p> <p>Auto arch and auto nerve faster processing performance</p> <ul style="list-style-type: none"> ▪ Auto Arch Mapping: up to 3x faster compared to previous version ▪ Nerve Tracing : up to 3.5x faster compared to previous version 	 <p>The screenshot shows the CS 3D Imaging software interface. It displays a 3D model of a dental arch with orange lines indicating the mapping process. Below the main view, there are several smaller panels showing different views of the arch and nerve tracing results. The interface includes various toolbars and a sidebar with icons for different software features.</p>